

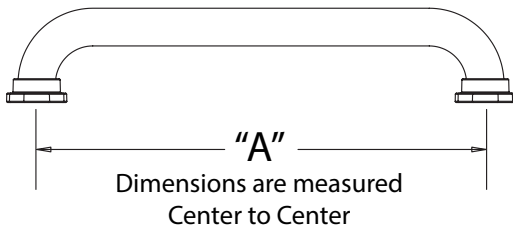
How To Order

1" Diameter Grab Bars

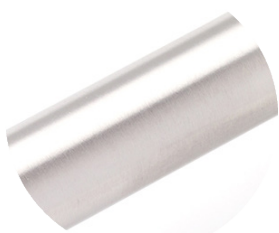
Applications: *Architectural | Commercial | Institutional | Residential*

Configurations: **01, 07, 08, 09, 12, 13, 15, 16, 25**

Configuration	Diameter	Material	Dimension(s)	Grip	Flange	Color
01 - Straight Bar 07/08 - Bar with Post 09 - 90° Bar 12/13 - 120° Bar 15/16 - Wall to Floor 25 - Inside Corner	1 1" diameter	1 Chrome 2 Stainless Steel 5 Powder Coated	<i>*Dimensions in inches, denote each length. See Config. Guide for stock dimensions.</i>	S Smooth P Peened K Knurled	L Low Profile H High Profile T Twist Lock J 3 Hole Exposed	-01 White -02 Almond <i>* For powder coating only</i>



Grips:



Smooth

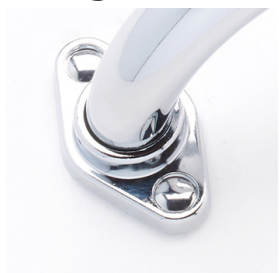


Peened



Knurled

Flanges:



Low Profile



High Profile



Twist Lock



3 Hole Exposed